



SHIRELAND
TECHNOLOGY PRIMARY

Opening
September
2019



**Bright Futures for
Creative Minds**

Welcome

+ It is a wonderful thing,
building a school from scratch.

Not only does it mean that our pupils will have access to a bespoke modern-build, but it means that as we develop our school we are able to combine our innovative learning environment with high-quality teaching and exceptional learning experiences to provide our community with an outstanding education.

In Smethwick, demand for primary school places is high; we not only want to help meet this demand but set a high precedent for primary education as a whole. Technology will be utilised within our exciting curriculum to bring learning to life, enabling our pupils to excel.

Our founding pupils will have the unique opportunity to start this journey with us. Alongside their families, they will also help to shape the academy and provide a legacy for the local community. When we open our doors in September 2019 we will be at the beginning of something truly special.



Kirsty Tonks

Principal and Primary Education Lead
for Shireland Collegiate Academy Trust



Bright Futures for Creative Minds

“

This is not about children sitting in lines at a screen all day with headphones on, but about using digital technology **smartly** and **creatively** to improve levels of progress

”



Our philosophy

⊕ As a Technology Primary, our purpose is to empower pupils to achieve beyond expectations by providing the best technology-enabled opportunities.

We believe that every pupil should be equipped for the future through teaching relevant skills for the world in which they live. In the 21st Century world, technology is utilised across multiple platforms and sectors; we believe that these 21st Century skills are often neglected at a primary level.

We want to give local children the opportunity to start to develop these skills, which will benefit them as they go on to further education and then ultimately the highly competitive working world.

Excite Explore Excel

We believe that technology has the power to **excite** our pupils, it offers endless opportunities to **explore** a rich and varied curriculum and provides a platform for our pupils to truly **excel**.

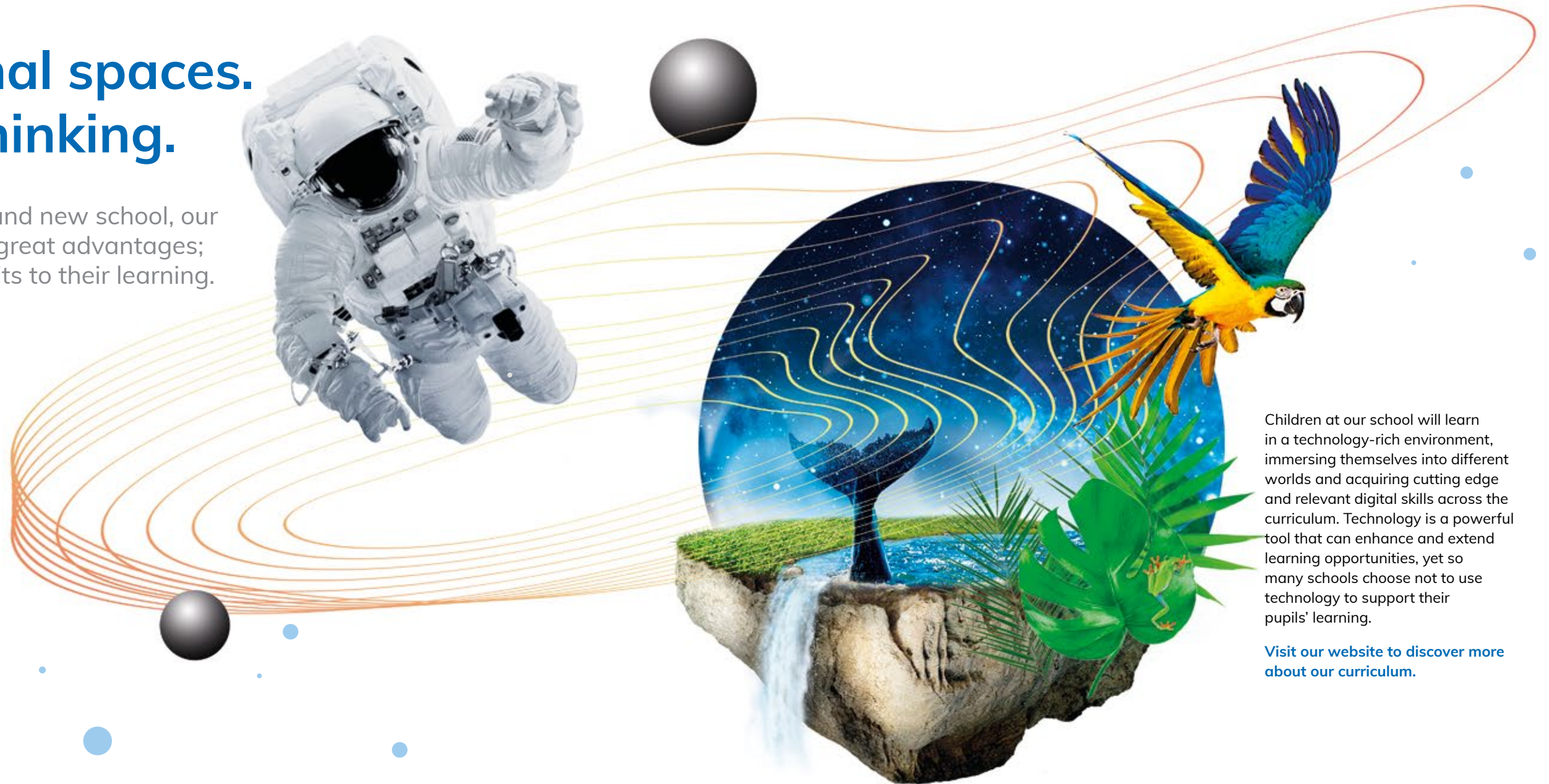
We are passionate about ensuring that everyone who walks through our doors leaves with a sense of pride in all that they have achieved. We want to spark curiosity within pupils; to engage them in their learning, produce outstanding outcomes and therefore achieve high standards.

Inspirational spaces. Smarter thinking.

✚ By starting at a brand new school, our students will have great advantages; there will be no limits to their learning.

Our curriculum has been carefully designed to engage pupils in a full range of subjects through our diverse cross-curricular themes. We have been able to utilise years of experience and expertise within primary education to create something very special; we have designed a curriculum that makes learning relevant, immersive and exciting.

Our values **excite, explore, excel** drive our curriculum and our pupils' learning journey. These values also drive its name: E³L for Excite, Explore, Excel Learning.



Children at our school will learn in a technology-rich environment, immersing themselves into different worlds and acquiring cutting edge and relevant digital skills across the curriculum. Technology is a powerful tool that can enhance and extend learning opportunities, yet so many schools choose not to use technology to support their pupils' learning.

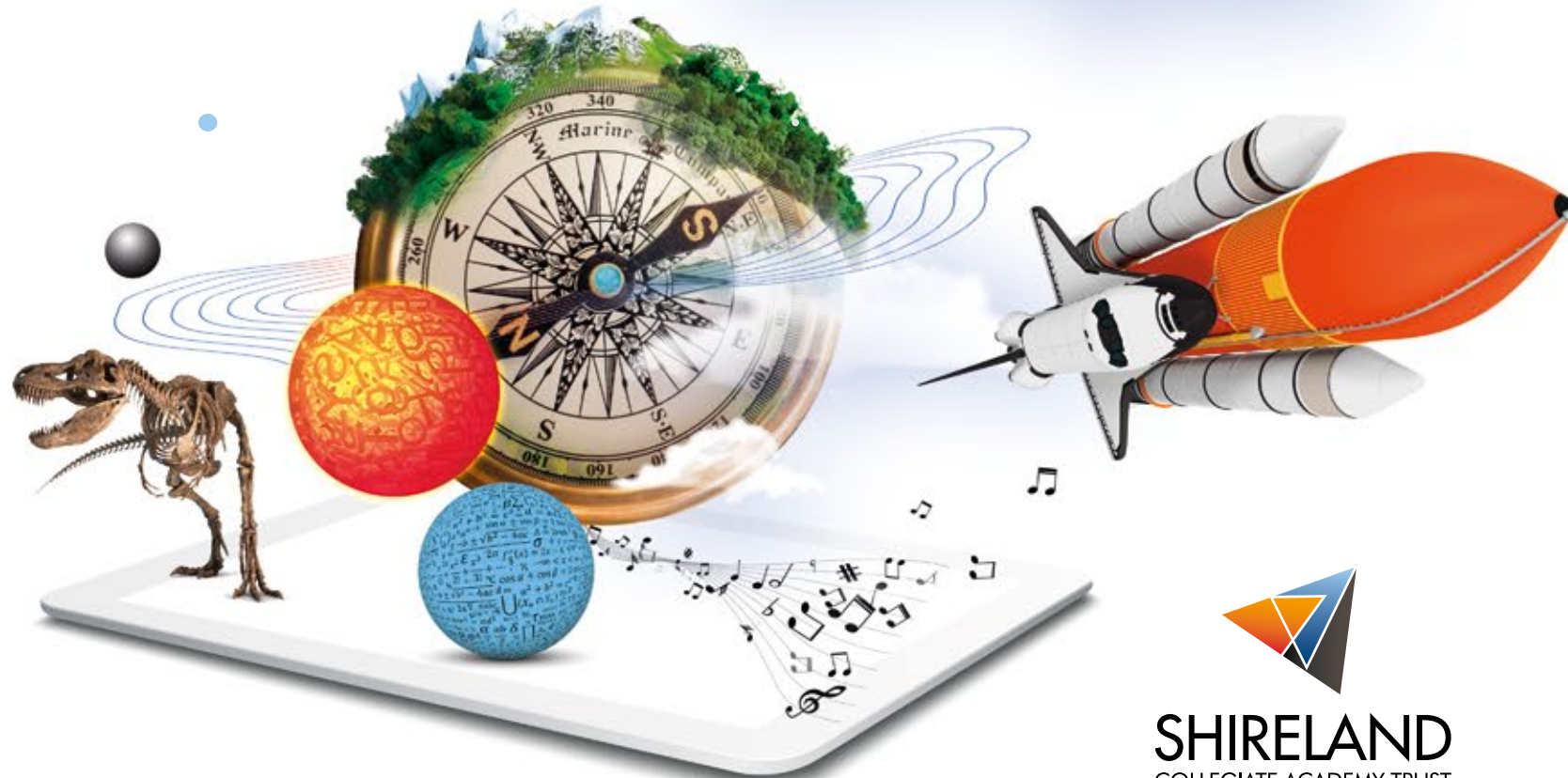
[Visit our website to discover more about our curriculum.](#)

Part of a strong and growing Trust

⊕ Our Technology Primary is supported by Shireland Collegiate Academy Trust.

Founded in 2007 by Shireland Collegiate Academy, an Ofsted 'Outstanding' school, the Trust is led by CEO Sir Mark Grundy and believes that everyone should have access to exceptional education, regardless of background or ability level.

Our Primary Trust Team is focused on providing outstanding educational opportunities for all and supporting the staff of Shireland Technology Primary School to deliver the best learning experiences that they can, using technology to enhance levels of progress and inspiring individuals within our care.



Innovate Inspire Collaborate



SHIRELAND
COLLEGIATE ACADEMY TRUST

The Trust has three principal cornerstones:
To be **innovative** staff must be leaders of learning, allowing students to aim higher.

Inspiration comes from all staff members seeing further, motivating pupils to change attitudes.

Collaboration is a product of staff promoting cohesion within the school community, so that students are concerned for all.

Start your journey with us

⊕ In its first year, our primary school will be open for Reception and Year 1 classes; a new Reception cohort will join us each subsequent year until we reach full capacity in 2024.

Pupils will have access to facilities and technologies which, alongside our innovative teaching methods, will provide first-class learning opportunities for all.

We are only at the start of this exciting journey; come and join us!

How to Apply

Our inclusive admissions process will at all times be open, transparent and fair; it will meet the requirements of the national Schools Admissions Code, the Appeals Code and Admissions legislation.

Shireland Technology Primary will process applications outside the normal local authority process for co-ordinating school offers. We will accept admissions made **directly** to Shireland Technology Primary.

Apply directly:

Online and paper copies of our admissions forms can be found on our website:
shirelandtechprimary.school



T: 0121 5658812
E: info@stp.shirelandcat.org.uk
www.shirelandtechprimary.school