



SHIRELAND
TECHNOLOGY PRIMARY

PROUDLY PART OF



**Bright Futures for
Creative Minds**

Welcome

It is a wonderful thing,
building a school from scratch.

Not only does it mean that our pupils will have access to a bespoke, modern build, but it means that as we develop our school we are able to combine our innovative learning environment with high-quality teaching and exceptional learning experiences to provide our community with an outstanding education.

Our exciting curriculum provides our pupils with the opportunity to excel; technology provides the platform in which children can reach their fullest potential and our unique blend of academic rigour and engaging opportunities means that during their time with us pupils receive a well-rounded, whole education that helps our pupils thrive and excel.

We are a growing school with the community at the heart of everything we do. As a new school, there are many advantages. It means that the first sets of families have a fundamental role in the growth and development of our school community. Children will have an array of resources and opportunities available to them; as they take their journey through their time with us, the school will grow with them.

Throughout the coming months, I look forward to meeting and welcoming new families to our special school.

Lady Kirsty Grundy
Principal, Shireland Technology Primary



Bright Futures for Creative Minds

“

Technology is the tool that enables outstanding teaching to take place on a daily basis; to deliver extended and personalised learning opportunities beyond the classroom.

”



Our Philosophy

As a Technology Primary, our purpose is to empower pupils to achieve beyond expectations by providing the best technology-enabled opportunities.

We believe that every pupil should be equipped for the future through teaching relevant skills for the world in which they live. In the 21st Century world, technology is utilised across multiple platforms and sectors; we believe that these 21st Century skills are often neglected at a primary level.

We want to give local children the opportunity to start to develop these skills, which will benefit them as they go on to further education and then ultimately the highly competitive working world.

We believe that technology has the power to excite our pupils; it offers endless opportunities to explore our rich and varied curriculum and provides a platform for our pupils to truly excel.

We are passionate about ensuring that everyone who walks through our doors leaves with a sense of pride in all that they have achieved. We want to spark curiosity within pupils; to engage them in their learning, produce outstanding outcomes and therefore achieve high standards.



Excite
Explore
Excel



Our Academy

We are a two-form primary in the heart of the Smethwick, serving families within the local area.

Our values Excite, Explore, Excel mirror the learning journey a child takes every day they are with us.

Our school will expand each year until we reach all year groups in 2024.

Since opening in 2019 we have seen our children make exceptional progress each year despite the pandemic.

In English and Maths:

- 88% of Key Stage 1 pupils reach Expected Standard.
 - 28% of Key Stage 1 pupils reach Greater Depth.
- (using CEM standardised assessments from the University of Durham).

In our most recent Parents' Survey in 2022:

- 100% of families agree that their child is making very good progress at this school.
- 100% of families would recommend this school to other parents.



A Brand-New Building

The purposefully designed building has been designed to fit into the landscape in order to maximise the space for pupils.

In addition to the carefully designed and resourced classrooms, we have several unique learning spaces that allow for the development and learning in subjects such as the Arts, Design Technology and Science. Our Creative Space, Innovation Room and Immersive Space ensure that alongside the academic fundamentals, pupils have the very best opportunities across a broad range of subject areas.

Outdoor learning and play is an important aspect of our school and as well as well-resourced play areas for each Key Stage, we have a specially designed roof top area and a bespoke Forest School area in the woodlands opposite our school.

The brand-new build allowed us to customise every detail to ensure the educational environment has been optimised for successful learning.



Our Curriculum

Our thematic curriculum offers pupils countless opportunities to develop curiosity in the world around them.

Our values Excite, Explore, Excel drive our curriculum and our pupils' learning journey. These values also drive its name: E3L for Excite, Explore, Excel Learning.

Our curriculum makes sure that pupils are **excited** to learn. By ensuring the high level of engagement, this means that pupils are more likely to **explore** within their learning. This curiosity, alongside outstanding teaching, ultimately means that they will **excel** in all that they do.





The School Day

At Shireland Technology Primary, our Fridays will look a little different to the rest of the week.

We've considered what we know about how children learn and have organised our school week to maximise learning while also offering an opportunity to learn outside of the classroom.

The school day will start at 8:30am for all pupils. From Monday to Thursday pupils will then finish at 3:30pm. This allows us to run our Fridays differently.



Enrichment Fridays

Because of our extended school day on Monday to Thursday, on Friday the school day will finish at 2:30pm for Reception to Year 6 pupils. Nursery children finish at 11:30am.

Children can either be collected at 2:30pm or remain in school with optional paid activities for high quality, structured Enrichment Activities until 3:30pm.

Working alongside our external partners, we have developed a suite of activities that helps develop a whole education and a 'cultural capital' for every child that attends.

Our programme offers the chance for children to experience a broad range of fun, high-quality activities across the year; from music, art and dance workshops all the way through to a variety of sports, science and visual media activities. We encourage every child to attend and benefit from these sessions.

Part of a Strong and Growing Trust

Our Technology Primary is supported by Shireland Collegiate Academy Trust.

Founded in 2007 by Shireland Collegiate Academy, a three-times Ofsted 'Outstanding' school, the Trust is led by CEO Sir Mark Grundy and believes that everyone should have access to exceptional education, regardless of background or ability level.

Our Primary Trust Team is focused on providing outstanding educational opportunities for all and supporting the staff of Shireland Technology Primary School to deliver the best learning experiences that they can, using technology to enhance levels of progress and inspiring individuals within our care.



Innovate Inspire Collaborate

The Trust has three principle cornerstones: To be innovative staff must be leaders of learning, allowing students to aim higher. **Inspiration** comes from all staff members seeing further, motivating pupils to change attitudes. **Collaboration** is a product of staff promoting cohesion within the school community, so that students are concerned for all.



SHIRELAND
COLLEGIATE ACADEMY TRUST

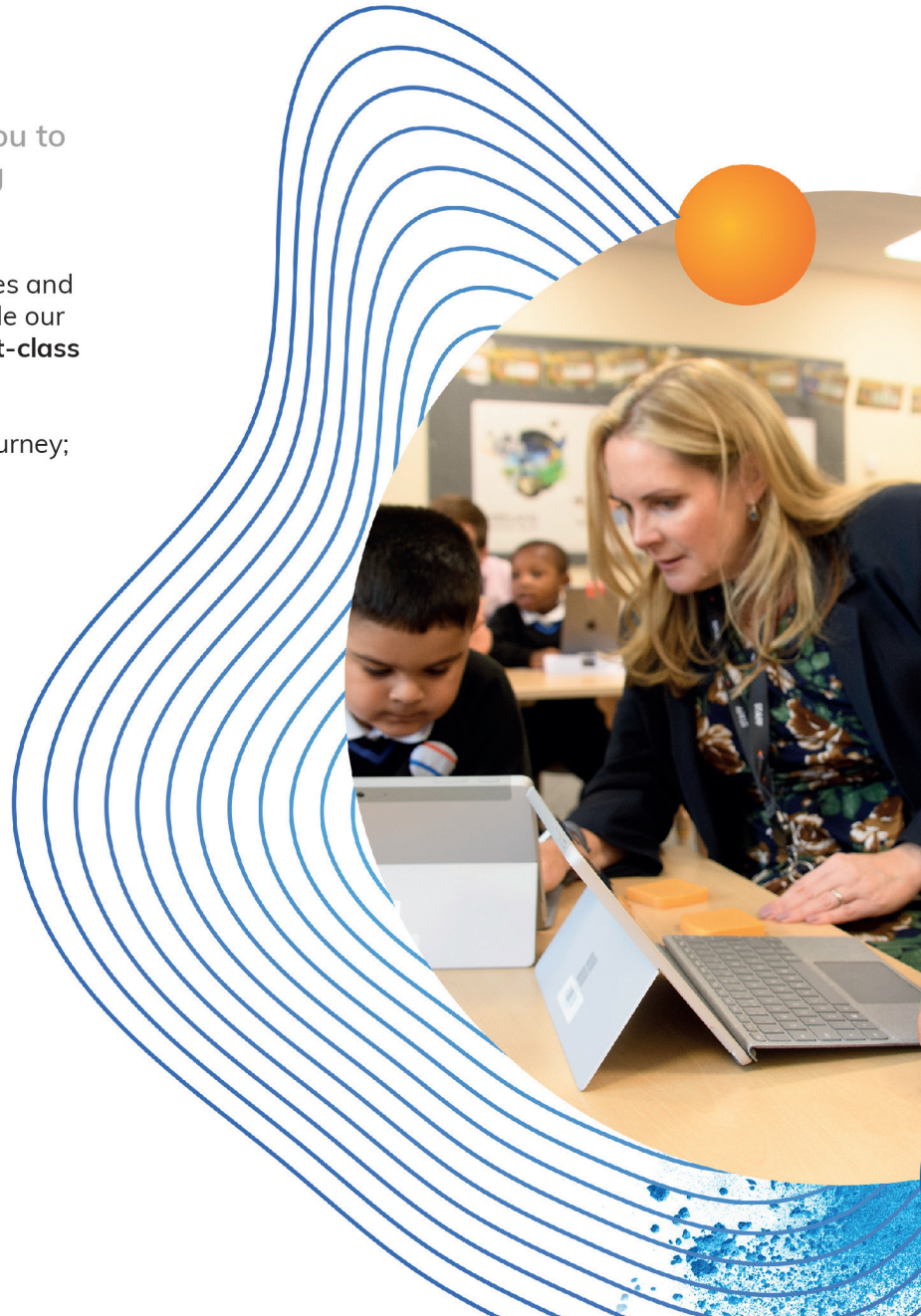


Start Your Journey With Us

As our primary grows, we invite you to come visit us and see our amazing school.

Pupils have access to phenomenal facilities and cutting edge technologies which, alongside our innovative teaching methods, provide **first-class learning opportunities for all**.

We are only at the start of this exciting journey; come and join us and apply now.



Apply Now

Our inclusive admissions process will at all times be open, transparent and fair, and will meet the requirements of the national Schools Admissions Code, the Appeals Code and Admissions Legislation. Shireland Technology Primary School will process applications inside the normal local authority process for co-ordinating school offers.

Our admissions process will open in September and close in January.

We will have 60 Reception places and 26 places in Nursery for a morning session.

Our Admissions Policy detailing how to apply, how places will be allocated and how to appeal can be found on our website:
www.shirelandtechnologyprimary.org.uk





SHIRELAND
TECHNOLOGY PRIMARY

Shireland Technology Primary,
Wilson Road, Smethwick,
West Midlands, B66 4BA.

T: 0121 565 8812

E: info@stp.shirelandcat.net

www.shirelandtechnologyprimary.org.uk

PART OF  SHIRELAND COLLEGIATE ACADEMY TRUST